

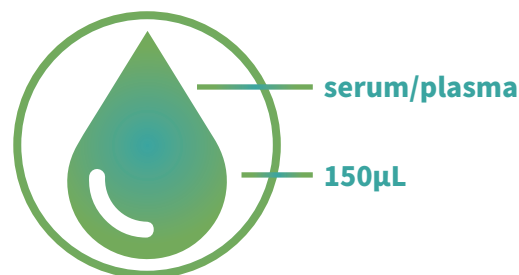
# Vamber®

## CANINE T&S IgE Allergy TEST KIT(T+80S)



### Advantages

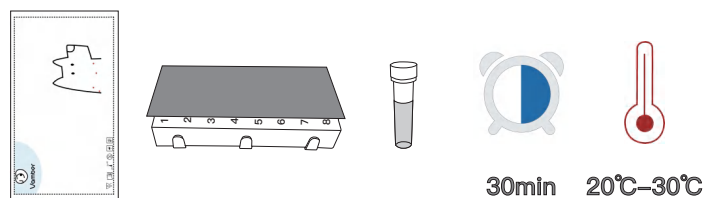
- Only **150μL** of serum or plasma is required.
- The entire testing process takes less than **100** minutes.
- One-time performance **testing of 80** dog allergen items.
- Easy to operate, no professional technicians or equipment required.
- Suitable for laboratory, pet hospital or home operation.



### Test procedure

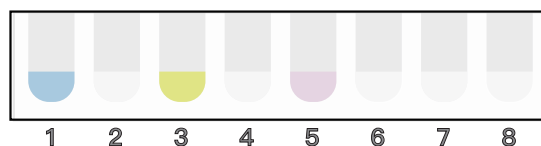
#### Preparation before performing the test:

**1.** Bring one Solid Array Unit package, one Solution Unit and one Substrate to room temperature (20°C-30°C) for 30 minutes before using.



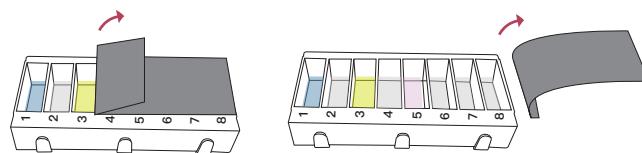
**2.** Prepare proper dispensers and pipette tips. 200μL and 1000μL are recommended.

**3.** Stand upright the Solution Unit on a work bench and confirm that compartment numbers, from 1 to 8, can be seen in correct direction. Stamp the Solution Unit slightly to make sure all the reagents in the compartments, from 1 to 8, turn back to the bottom.



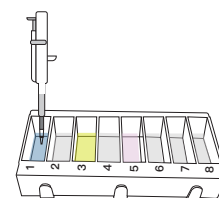
#### Performing the test:

**1.** Hold tightly the solution cartridge with one hand and pull the protective foil along the horizontal direction carefully with another hand from the compartment 1 to 8 to remove whole the protective foil off.

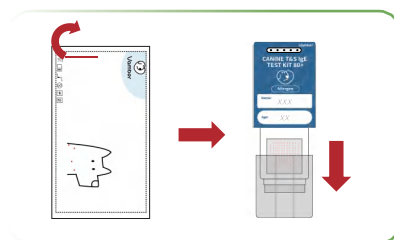


**2.** Obtain 150μL of the tested serum or plasma sample with a dispenser of 200μL.

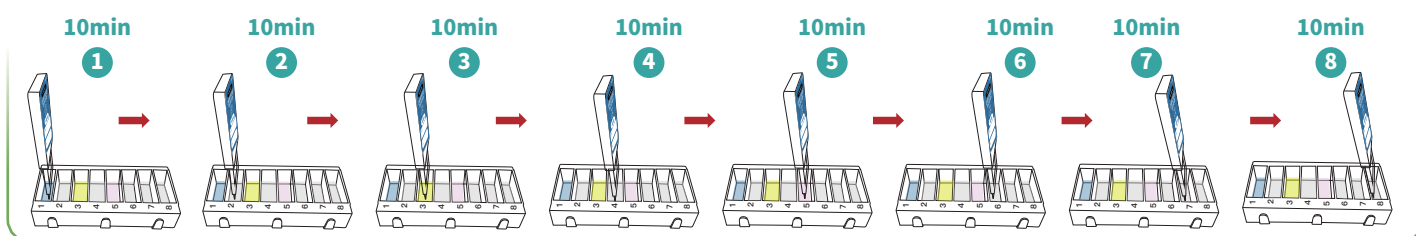
**3.** Deposit the sample into the compartment 1. Then raise and lower dispenser plunger several times to achieve mixing.



4. Open the aluminum foil bag, and take the Solid Array Unit out. Write dog's name and age on Solid Array Unit. Remove the protective cap.



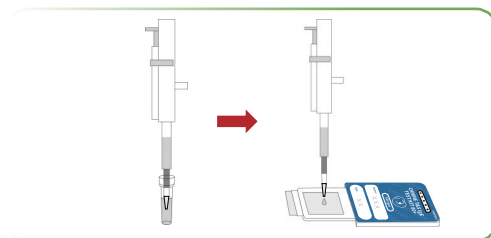
5. Insert the Solid Array Unit into the compartment 1, and let it stand there for 10 minutes. Pick up the Solid Array Unit and insert it into the compartment 2-8, and let it sit for 10 minutes each.



6. Pick up the Solid Array Unit and lay it flat on a work bench.

7. Pipette the Substrate from the substrate bottle, and drop it slowly on the membrane at the window center.

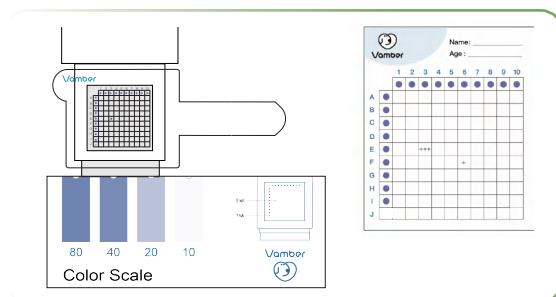
8. Wait for 15 minutes for developing purple blue color spots and interpret the result within 5 minutes.



9. Put the locator on the window of the Solid Array Unit in a proper position, and find the corresponding position in the spot if visible.

10. Compare the visible spots with the Color Scale provided to determine the corresponding signal strength level.

11. Record the notation of the located visible spots representing Total IgE and Specific IgE in the Result Card provided by hand according to the illustration in the INTERPRETING TEST RESULTS tables.



## Notes:

- Use the Solid Array Unit as soon as possible when taking the protective cap off.
- Do not touch the membrane and pick spots immobilized on the membrane.
- Hold the cartilage of the Solution Unit tightly when pulling, along.
- Horizontal direction, the protective foil off.
- Use different clean tips for transferring samples and substrate.
- Interpret results after finishing testing process within 5 minutes.
- If necessary, attach the provided Pet Labels for more than one sample testing.



Hangzhou Antigenne Technology Co., LTD

Add: Block A, Building 3, No. 8, Xiyuan 9th Road, Xihu District, Hangzhou, Zhejiang, 310030 P.R. China

Web: [www.antigenne.com](http://www.antigenne.com) E-mail: [info@antigenne.com](mailto:info@antigenne.com) Tel: +86-571-88722005

